



Closing

Keli DeVries, LMSW

MOQC Connection Visits



Review practice
performance &
patient list eligibility



Celebrate your
successes



Brainstorm ideas
for performance
improvement



Review printed and
digital resources

In-person and virtual options are available!

Interprofessional Development

COMPASSIONATE DE-ESCALATION

THURSDAY, FEBRUARY 12, 2026 - 12-1PM

This session will be held via Zoom and recorded.



Cancer care. Patients first. The best care. Everywhere.



PRESENTED BY:

Rev. Diane Smith, MDiv., BCC

Angela Hospice

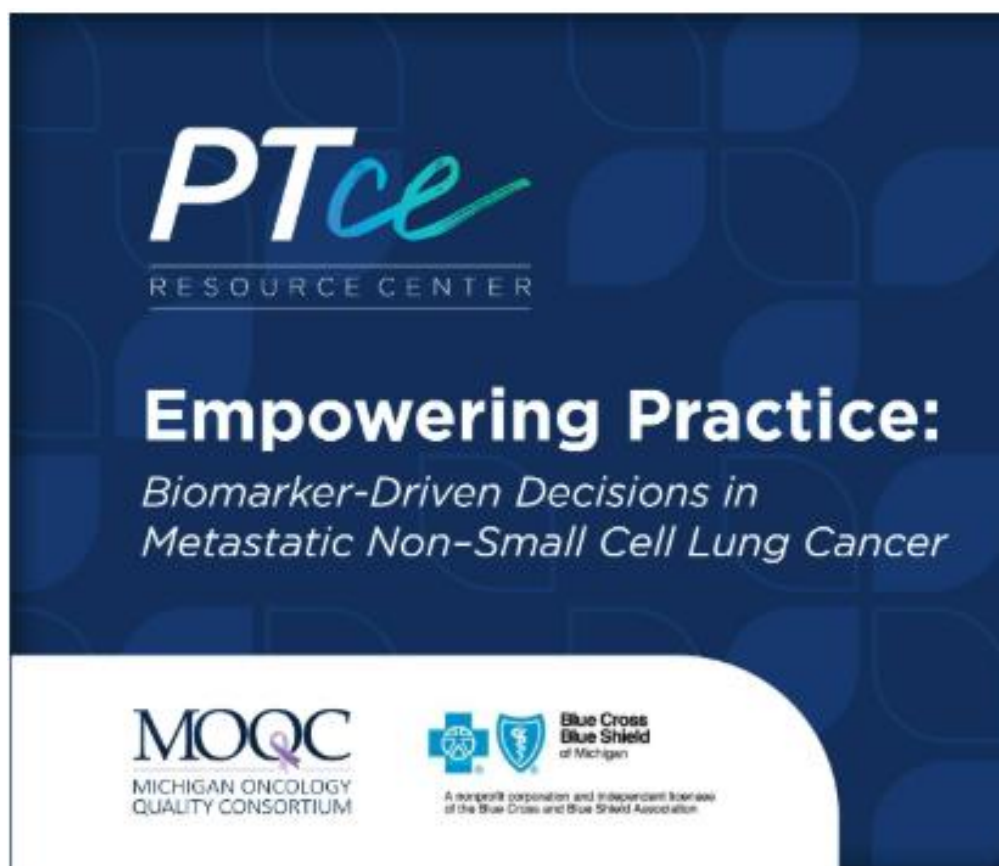
Intended audience:

All healthcare team members

Free, On-Demand CE Opportunity

Oncology Stewardship Initiative to Improve Biomarker Testing in mNSCLC

Now Available



Module 1

Biomarker Testing in Practice: Navigating modalities and multidisciplinary decision-making

- Panel discussion on guideline recommendations and best practices for testing prior to treatment selection
- Free 1.25 CE credits for MD, APP, and PharmDs <https://www.pharmacytimes.org/pages/nsclc-resource-center-moqc>

Module 2

Target to Treatment: Applying a stewardship lens to frontline therapies in oncology

- Multi-part short form videos on treatments for actionable biomarkers in advanced NSCLC
- Anticipated Available Quarter 2 of 2026

Module 3

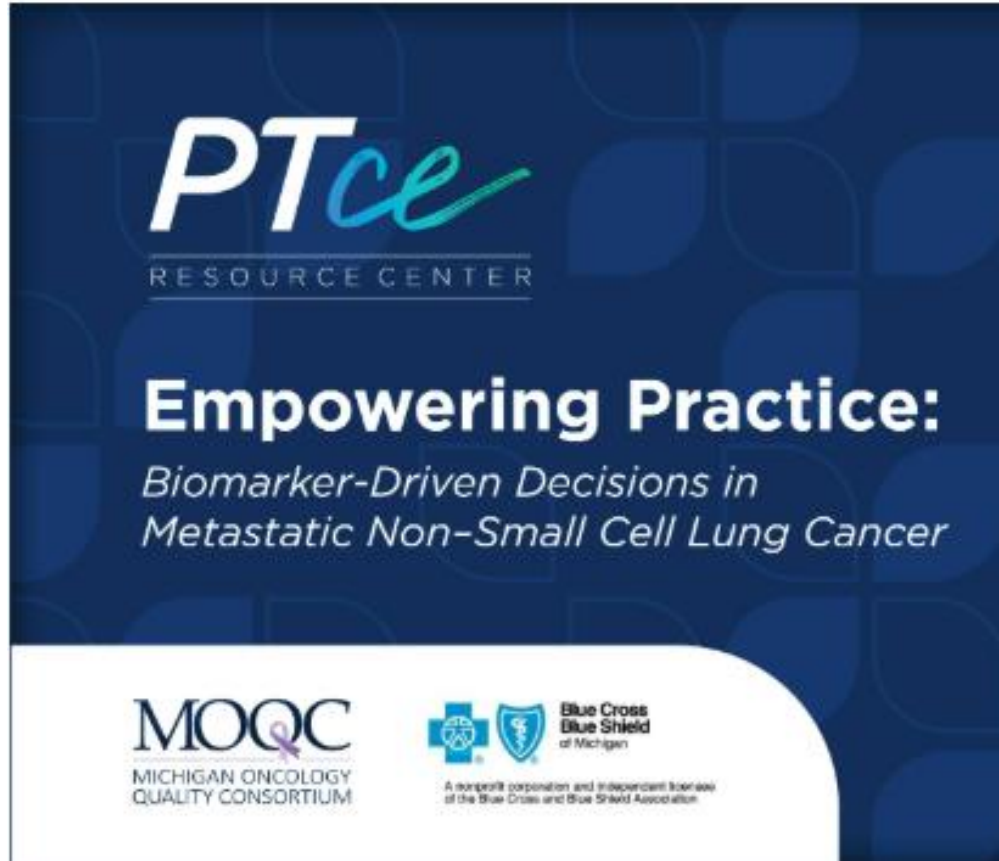
Advancing access to high-quality, biomarker-guided care for all patients with mNSCLC

- Panel discussion on opportunities and barriers to high-quality care in this population
- Anticipated available Q2 2026



Continuing Education Request

Oncology Stewardship Initiative to Improve Biomarker Testing in mNSCLC



Module 1

Biomarker Testing in Practice: Navigating modalities and multidisciplinary decision-making

- Panel discussion on guideline recommendations and best practices for testing prior to treatment selection
- Free 1.25 CE credits for MD, APP, and PharmDs <https://www.pharmacytimes.org/pages/nsclc-resource-center-mogc>

Module 2

Target to Treatment: Applying a stewardship lens to frontline therapies in oncology

- Multi-part short form videos on treatments for actionable biomarkers in advanced NSCLC
- Anticipated Available Quarter 2 of 2026

Module 3

Advancing access to high-quality, biomarker-guided care for all patients with mNSCLC

- Panel discussion on opportunities and barriers to high-quality care in this population
- Anticipated available Q2 2026

Looking for providers interested in serving on a panel for Module 3

Caregiver Navigation Training Opportunity

PROGRAM GOALS:

- ✓ Navigator Training
- ✓ Resource Coordination
- ✓ Oncology Integration
- ✓ Advocacy

SCHEDULED DATES:

Wednesdays, 12:00-1:00pm via Zoom
February 25 – March 25

Caregiver-specific training is for navigators or those acting as navigators
within MOQC practices



IF INTERESTED, VISIT:



Or email moqc@moqc.org

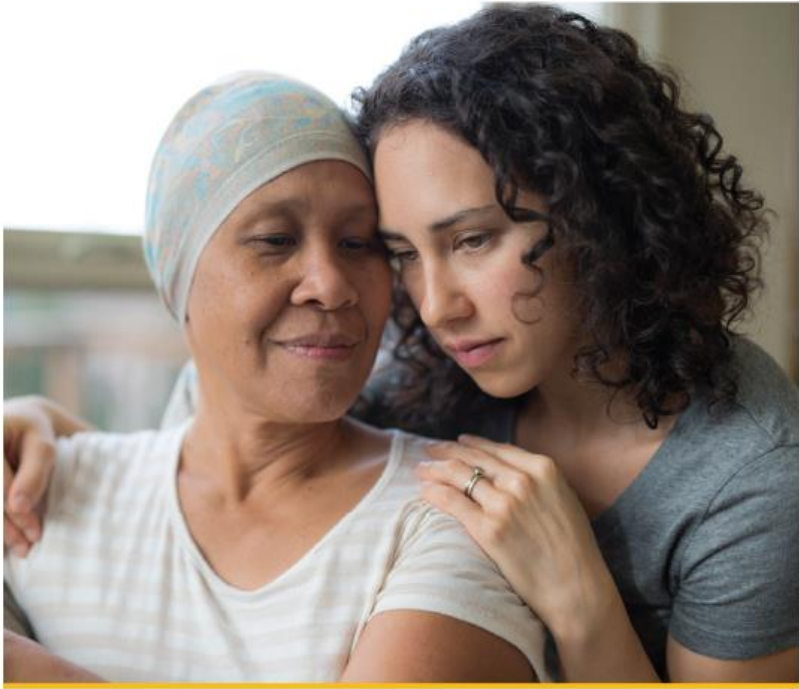
MOQC Resources

- MOQC has a variety of free resources for your **patients, caregivers, and clinicians**
- **Electronic and printed formats** available

www.moqc.org

ASCOanswers

Palliative Care
A Guide to Coping with Side Effects for People with Cancer and Their Families from the American Society of Clinical Oncology



Cancer.Net
Doctor-Approved Patient Information from ASCO®

Measure 108a: Documentation of a Complete Family History



What does complete family history include?

1st degree relatives cancer history documented + 2nd degree relatives cancer history documented + Age at diagnosis of ALL family members documented

1st degree:
• parents
• siblings
• children
2nd degree:
• grandparents
• aunts/uncles

↓

Complete family history documented

For whom should family history be collected?

- All patients with a cancer diagnosis

Where can family history be documented?

- Oncologist's note
- EMR's family history section
- Scanned documents or media tab

What if a patient has a family history of cancer?

- Document the family history

MOQC
MICHIGAN ONCOLOGY
QUALITY CONSORTIUM

MOQC Cancer Help Library MOQC.org

Resources Search Engine

Cancer has a huge impact on patients and their families, friends and other caregivers. Use this search engine to help find answers, guidance, and support.

MOQC is always working to gather and share resources that are important for anyone touched by cancer.


For more information about the Affordable Care Act (ACA), visit: HealthCare.gov

[Click Here](#)


Search Engine Feedback?

[Click Here](#)

For help navigating this search engine, here is a helpful instructional video:




Search Engine Testimonial:



OLANZAPINE


WHY AM I GETTING A PRESCRIPTION FOR OLANZAPINE?

The cancer treatment that you will be getting can cause nausea or vomiting. We do everything we can to reduce this side effect. Olanzapine is highly effective, even in small doses, at decreasing nausea and vomiting and is an important part of your care.




WHAT SHOULD I EXPECT WHEN I GO TO THE PHARMACY?

Olanzapine was originally approved for people with certain mental illness. The pharmacist may tell you about the original reason the drug was used when you drop off your prescription or pick up your medication. We want you to be prepared for this possibility. You may wish to tell the pharmacist why you have been prescribed olanzapine and that your cancer team is prescribing olanzapine for a completely different reason. This original approval for the medication does not make your insurance or your medical record think you have the certain mental illness when you get the prescription.




WHAT ABOUT THE SIDE EFFECTS?

Nearly all the side effects listed for this medication occur in people who are on higher doses of the medicine and who take the medicine every day for many years. People who take olanzapine for chemotherapy are not likely to get side effects other than tiredness. It is often recommended that you take it in the evening because of this.



IS OLANZAPINE COVERED BY INSURANCE? IS IT EXPENSIVE?

This medication is much less expensive than other medicines used to prevent side effects of chemotherapy. The cost for each pill is about 20 cents. Most insurance will cover the cost, but you can also choose to pay for it on your own if insurance does not cover it.



THESE SITES MAY BE HELPFUL TO LEARN MORE ABOUT NAUSEA AND VOMITING RELATED TO CANCER TREATMENT:

National Cancer Institute - www.cancer.gov
American Cancer Society - www.cancer.org
American Society of Clinical Oncology - www.cancer.net
National Comprehensive Cancer Network - www.nccn.org

MOQC
MICHIGAN ONCOLOGY
QUALITY CONSORTIUM

Continuing Education Credits

This meeting has been approved for 4 CEU

1. MOQC will distribute an evaluation as part of the follow-up email after this meeting
2. Attendees should complete the evaluation
3. Attendees will receive a certificate from the CE accreditation organization with their credits
4. The certificate will be sent from ipceapps@umn.edu

Questions? Please reach out to moqc@moqc.org

Upcoming Meetings

MOQC Biannual Meetings	
2026 Spring Gynecologic Oncology Biannual	Wednesday, March 11 (Virtual)
2026 June Medical Oncology Biannual	Friday, June 26 (Dearborn)

MOQC 2026 Spring Regional Meetings (6:00-7:30 PM; Virtual)	
West of Woodward (WOW)	Wednesday, March 25
Lake Michigan Oncology Region (LMOR)	Monday, April 6
Metro East	Monday, April 13
Central Michigan Group (CMG)	Wednesday, April 15
Superior Regions (East & West)	Wednesday, April 22

Register at: <https://moqc.org/events/>



MICHIGAN ONCOLOGY
QUALITY CONSORTIUM

Cancer care. Patients first.
The best care. Everywhere.