



MOQC June Biannual Meeting

June 17, 2022

Welcome

Keli DeVries, LMSW



Agenda

Morning Session | 10 am

10:00-10:30	Welcome and Overview POQC Update Steering Committee Update Palliative Care and End-of-Life Task Force Update	Keli DeVries, LMSW Diane Drago, BS Dawn Severson, MD Hope Dudek, LMSW
10:30-11:15	MOQC Practice Performance & Discussion	Jennifer Griggs, MD, MPH
11:15-11:25	Break—Mindfulness and Movement	Vanessa Aron, RYT
11:25-12:55	Patient-Reported Outcomes Panel The Voice of the Patient	Christopher Friese, PhD, RN Tracey Cargill-Smith, BA Theresa Zatirka, MPH Katie Sias, PharmD, BCOP Alexandra Chong, PhD

Lunch | 12:55 pm

12:55-1:50	Break for lunch
------------	-----------------

Afternoon Session | 1:50 pm

1:50-2:35	The Clinician as Activist	Jerome Seid, MD Jennifer Griggs, MD, MPH
2:35-2:40	Break	
2:40-3:50	Caring for the Caregiver Panel	Intro: Laurel Northouse, PhD, RN Moderator: Keli DeVries, LMSW Beth Fisher-Polasky, BS Cynthia Koch, PhD Jenny Moeller, MS David Smith, MD

Close | 3:50 pm

3:50-4:00	Closing Items	Keli DeVries, LMSW
-----------	----------------------	--------------------



Confidentiality Reminder

**All practice information
shared in this meeting is
for quality improvement
purposes only and is
confidential.**



WIFI

- Network: MOQC
- Password: 61722



Lactation* + Prayer Rooms Available
Restroom locations

*Key for lactation room available at registration desk



**Photographer available
during lunch break**

Registration desk staffed all day



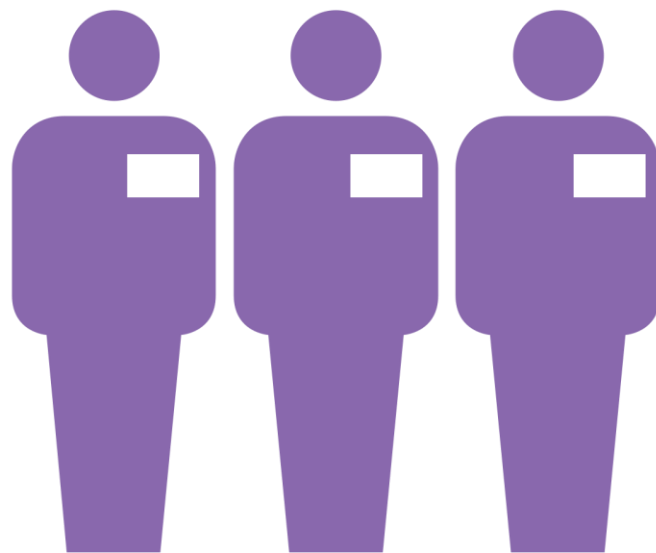
MOQC

MICHIGAN ONCOLOGY
QUALITY CONSORTIUM

moqc.org



Need a MOQC person? Look for a lanyard!



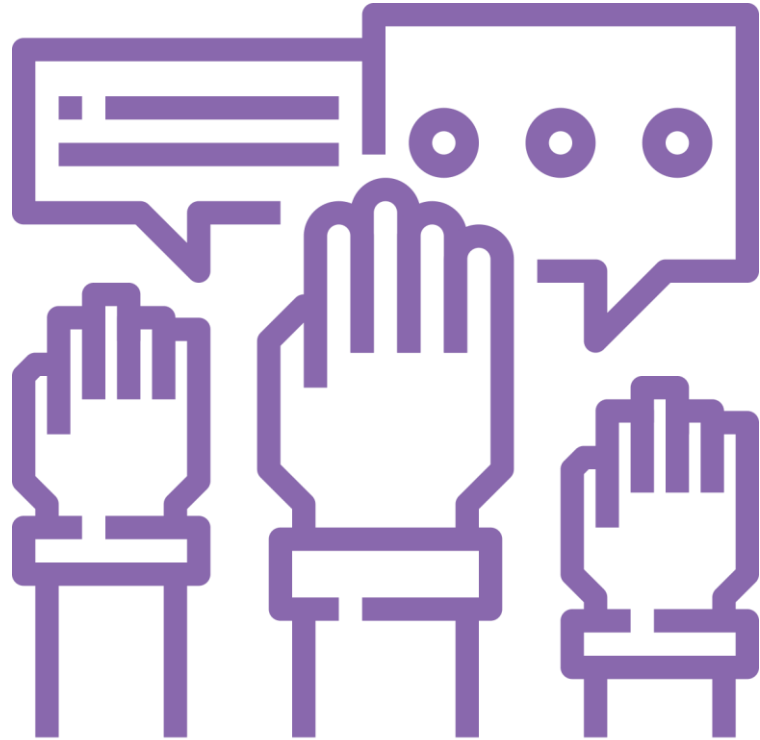
MOQC Team Members



To learn more about our team, visit <https://moqc.org/moqc/about-moqc/>


- Vanessa Aron
- Heather Behring
- Dave Bolen
- Ashley Bowen
- Keli DeVries
- Chris Frieese
- Jennifer J Griggs
- Kleo Kolizeras
- Manlan Liu
- Emily Mackler
- Cindy Michalek
- Ermili Potka
- Beth Rizzo
- Heather Rombach
- Mariem Ruiz Martinez
- Natalia Simon
- Deborah Turner
- Shitanshu Uppal
- Shayna Weiner
- Shawn Winsted

Questions?

Use the QR Code on your agenda to submit questions throughout the day!



 MICHIGAN ONCOLOGY QUALITY CONSORTIUM <small>Cancer care. Patients first. The best care. Everywhere.</small>		Biannual Meeting Radisson Hotel Lansing at the Capitol Friday, June 17, 2022 10:00 am – 4:00 pm	 Blue Cross Blue Shield of Michigan <small>A nonprofit corporation and independent licensee of the Blue Cross and Blue Shield Association</small>
Patient-Reported Outcomes in Oncology: Why, What, Where, When, Who, & How?			
Morning Session 10 am			
10:00-10:30	Welcome and Overview POQC Update Steering Committee Update Palliative Care and End-of-Life Task Force Update	Keli DeVries, LMSW Diane Drago, BS Dawn Severson, MD Hope Dudek, LMSW	
10:30-11:15	MOQC Practice Performance & Discussion	Jennifer Griggs, MD, MPH	
11:15-11:25	Break—Mindfulness and Movement	Vanessa Aron, RYT	
11:25-12:55	Patient-Reported Outcomes Panel The Voice of the Patient	Christopher Friese, PhD, RN Tracey Cargill-Smith, BA Theresa Zatirka, MPH Katie Sias, PharmD, BCOP Alexandra Chong, PhD	
Lunch 12:55 pm			
12:55-1:50	Break for lunch	Afternoon Session 1:50 pm	
1:50-2:35	The Clinician as Activist		
2:35-2:40	Break		
2:40-3:50	Caring for the Caregiver Panel	Intro: Laurel Northouse, PhD, RN Moderator: Keli DeVries, LMSW Beth Fisher-Polasky, BS Cynthia Koch, PhD Jenny Moeller, MS David Smith, MD	
Close 3:50 pm			
3:50-4:00	Closing Items	Keli DeVries, LMSW	



To access polls during the meeting or to submit any questions,
either scan this QR code or navigate to [slido.com](https://www.slido.com) and enter event
code #4345 782

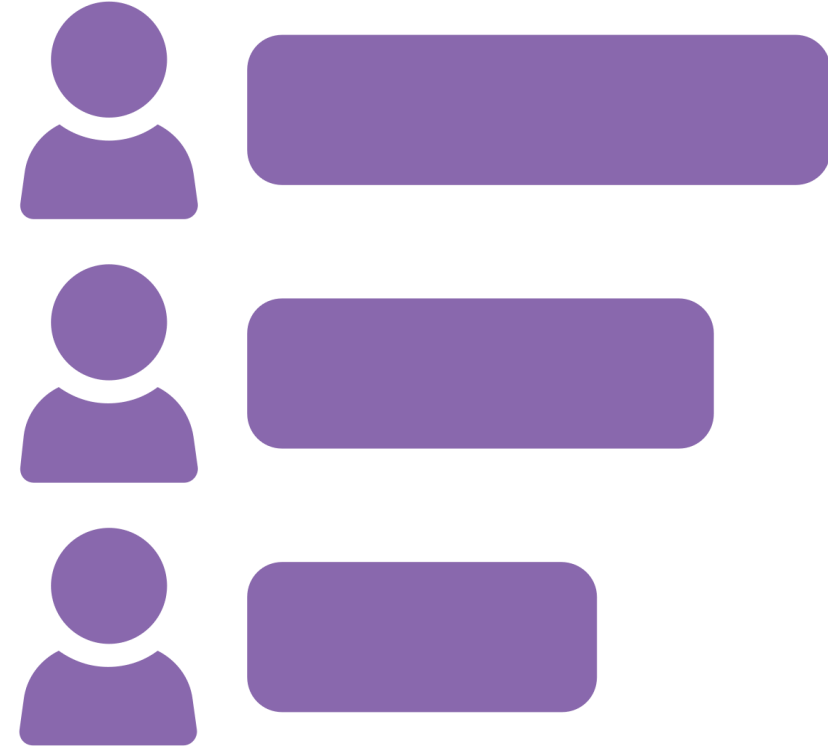


Connections



[slido.com](https://www.slido.com)

event code #4345 782



Testing Phase



Testing underway



Broad release by the end of July



Testimonials

We appreciate MOQC's persistence, effort, and time. Through MOQC, we get to share our experience and learn from other practices in our region. Hope to see you in person next time.

PHYSICIAN

We have benefitted from so many things from MOQC as a small site: the smoking cessation program, oral oncolytics, hospice care, pain management, physician support, the ongoing dialog. The list is endless.

Across all of the various regions, we hear and learn from each other. We grow as a group.

I'm grateful for their ongoing focus on care for the patients the families. MOQC covers it all.

REGIONAL DIRECTOR

I'm proud to say I've been a POQC member for more than five years. I can't imagine not having this enriching work in my life.

POQC MEMBER



Continuing Education Credits



Office of Interprofessional Continuing Professional Development



Disclosure Statement

As a Jointly Accredited Provider of Interprofessional Continuing Education Credit, the National Center for Interprofessional Practice and Education Office of Interprofessional Continuing Professional Development (OICPD) complies with the ACCME and Joint Accreditors' Standards for Integrity and Independence in Accredited Continuing Education. The National Center has a conflict of interest policy that requires all individuals involved in the development, planning, implementation, peer review and/or evaluation of an activity to disclose any financial relationships with ineligible companies. The National Center performs a thorough review of the content of the accredited activity to ensure that any financial relationships have no influence on the content of accredited activities. All potential conflicts of interest that arise based on these financial relationships are mitigated prior to the accredited activity.

Office of Interprofessional Continuing Professional Development



Disclosures

There are no conflicts of interest or financial relationships with an ineligible company that have been disclosed by the planners and presenters of this learning activity.

Office of Interprofessional Continuing Professional Development



In support of improving patient care, this activity is planned and implemented by The National Center for Interprofessional Practice and Education Office of Interprofessional Continuing Professional Development (OICPD) and The Michigan Oncology Quality Consortium. The National Center OICPD is jointly accredited by the Accreditation Council for Continuing Medical Education (ACCME), the Accreditation Council for Pharmacy Education (ACPE), and the American Nurses Credentialing Center (ANCC) to provide continuing education for the healthcare team.

Physicians: The National Center OICPD designates this activity for a maximum of **5 AMA PRA Category 1 Credit(s)™**. Physicians should only claim credit commensurate with their participation.

Nurses: Participants will be awarded up to **5** contact hours of credit for attendance at this activity.

Nurse Practitioners: The American Academy of Nurse Practitioners Certification Program (AANPCP) accepts credit from organizations accredited by the ACCME and ANCC.

Pharmacists and Pharmacy Technicians: This activity is approved for **5** contact hours (5 CEU)

Social Workers: As a Jointly Accredited Organization, the National Center OICPD is approved to offer social work continuing education by the Association of Social Work Boards (ASWB) Approved Continuing Education (ACE) program. Organizations, not individual courses, are approved under this program. State and provincial regulatory boards have the final authority to determine whether an individual course may be accepted for continuing education credit. The National Center OICPD maintains responsibility for this course. Social workers completing this course receive up to **5** continuing education credits.



IPCE: This activity was planned by and for the healthcare team, and learners will receive **5** Interprofessional Continuing Education (IPCE) credits for learning and change

POQC Update

Diane Drago, BS

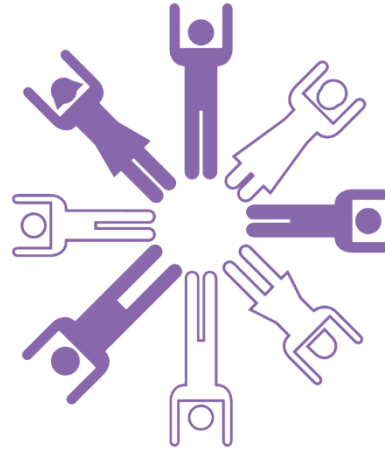


POQC Workgroups

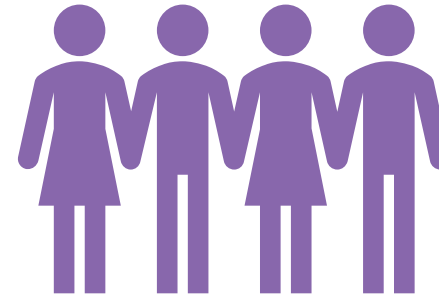
Financial Navigation



BVOGUE



Recruitment & Retention



Patient & Caregiver Resources



Patient and Caregiver Resources Workgroup

- ❖ Diane Drago, BA
- ❖ Llewellyn Drong, BS
- ❖ Sharon Kim, MA, BA
- ❖ Jennifer Nagy, BS
- ❖ Matt Ward
- ❖ Vanessa Aron, BA
- ❖ Ashley Bowen, MS, RD
- ❖ Arielle Davidson, BS
- ❖ Special assistance from
Kathy Roeser, BFA
(Wagner Design
Associates)



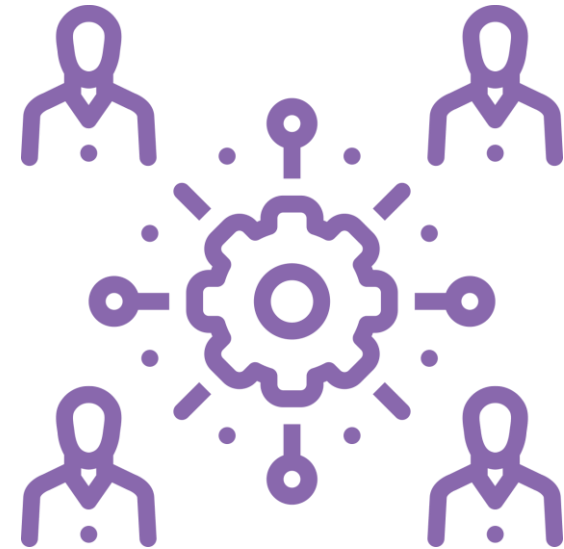
VIDEO

<https://youtu.be/2SGcx-CCSSo>

cancerhelp.moqc.org

Steering Committee Update

Dawn Severson, MD



Steering Committee Members

Kevin Brader	Kate Schumaker
Mike Harrison	Dawn Severson, Chair
Cynthia Koch	Heather Spotts
Diana Kostoff	Ammar Sukari
Kathy LaRaia	Padmaja Venuturumilli
Sherry Levandowski	Shannon Wills
Michelle Loree	Tracey Cargill-Smith
Nick Erikson	Aimee Ryan
Timothy Cox	Beth Sieloff
Colleen Schwartz	Diane Drago
Tom Gribbin	Nick Erikson
Mike Stellini	Aimee Ryan
Donna Edberg	

Steering Committee Update



- ✓ Gyn onc physicians to be on the Steering Committee going forward
- ✓ MOQC Certification proposal is being presented to BCBSM for approval. If approved, we will develop a task force to create the details of the MOQC Certification program
- ✓ Seeking members for our Steering Committee, Measures Committee, & Research & Publication Committee. Email moqc@moqc.org to join.



Palliative Care & End-of-Life Task Force Update

Hope Dudek, LMSW

Palliative Care & End-of-Life Task Force

Name Change



Improving Communication



Palliative Radiation Therapy Pathway



New Measures



MOQC Practice Performance & Discussion

Jennifer J. Griggs, MD, MPH

2022 Value-Based Reimbursement Summary

Collaborative-Wide

Meet both

Smoking status recorded in medical record	75%
Tobacco cessation counseling administered or patient referred in past year	90%
Smoking treatment recorded in medical record	30%

2% Opportunity

Region-Level

Meet 3 of 4

NK1RA & olanzapine given with high emetic risk chemotherapy	25%
NK1RA given for low or moderate emetic risk cycle 1 chemotherapy	14%
Hospice enrollment	50%
Hospice enrollment within 7 days of death	30%

3% Opportunity

Practice-Level

Meet all 4 region-level measures	
Complete race and ethnicity data	90%

2% Opportunity



MICHIGAN ONCOLOGY
QUALITY CONSORTIUM

moqc.org

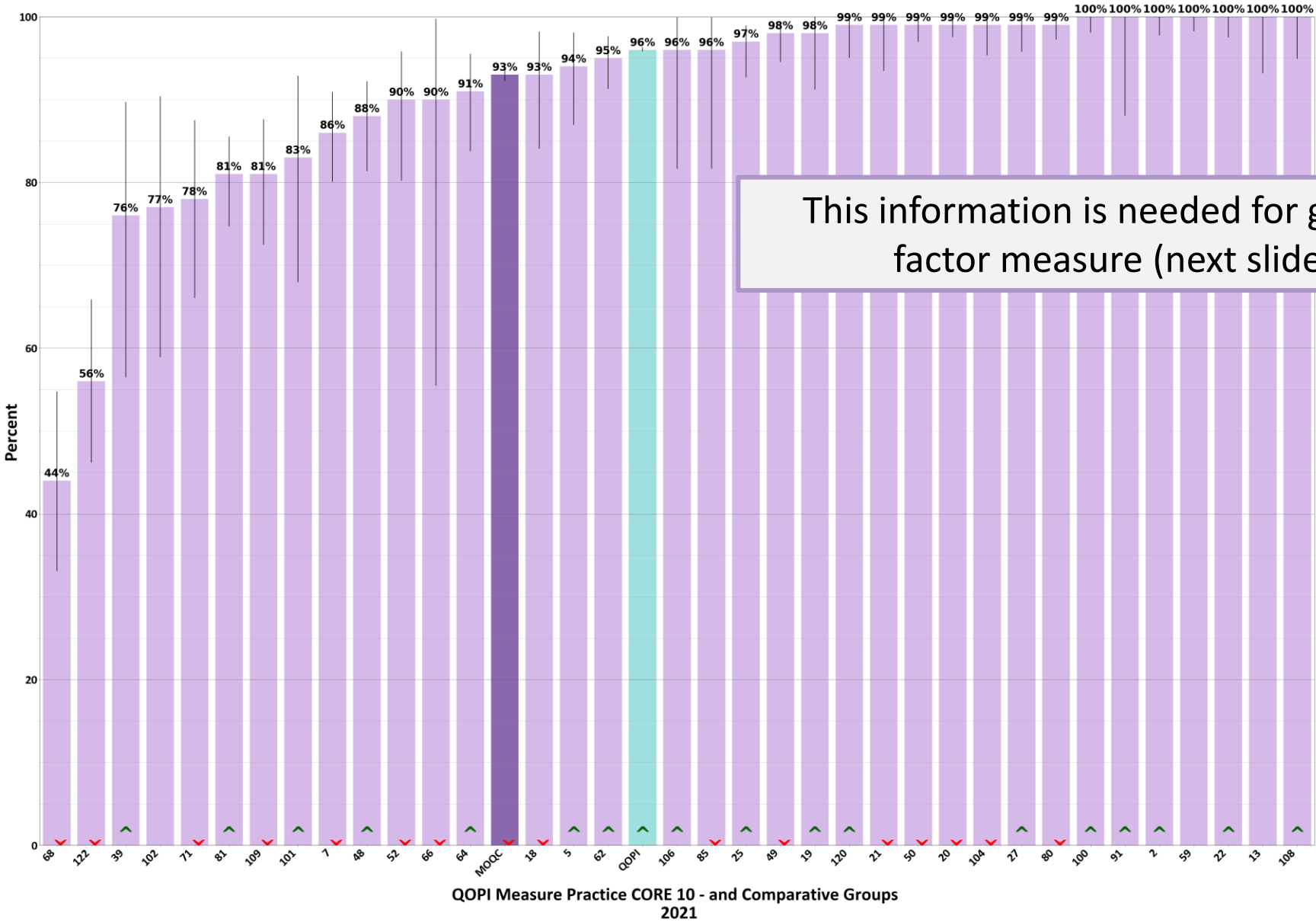
2022 Medical Oncology Measures

Measure	MOQC Pathway Measure	VBR Measure
CORE 10	Chemotherapy intent (curative vs non-curative) documented before or within 2 weeks	
MED #3	GCSF administered to patients who received chemotherapy for non-curative intent	
CORE 21aa	Smoking status recorded in medical record	x
CORE 22bb	Tobacco cessation counseling administered or patient referred in past year	x
MED #2	Complete family history document for patients with invasive cancer	
SMT 28	NK1RA & olanzapine prescribed or administered with high emetic risk chemotherapy	x
SMT 28a	NK1RA for low or moderate emetic risk cycle 1 chemotherapy (lower score – better)	x
RACE/ETHNICITY	Complete race and ethnicity data	x
EOL 42	Hospice enrollment	x
EOL 45	Hospice enrollment within 7 days of death (lower score – better)	x
HOSPICE_7 days	Enrolled in Hospice for over 7 days	
HOSPICE_30 days	Enrolled in Hospice for over 30 days	
EOL 48	Chemotherapy administered within the last 2 weeks of life (lower score - better)	

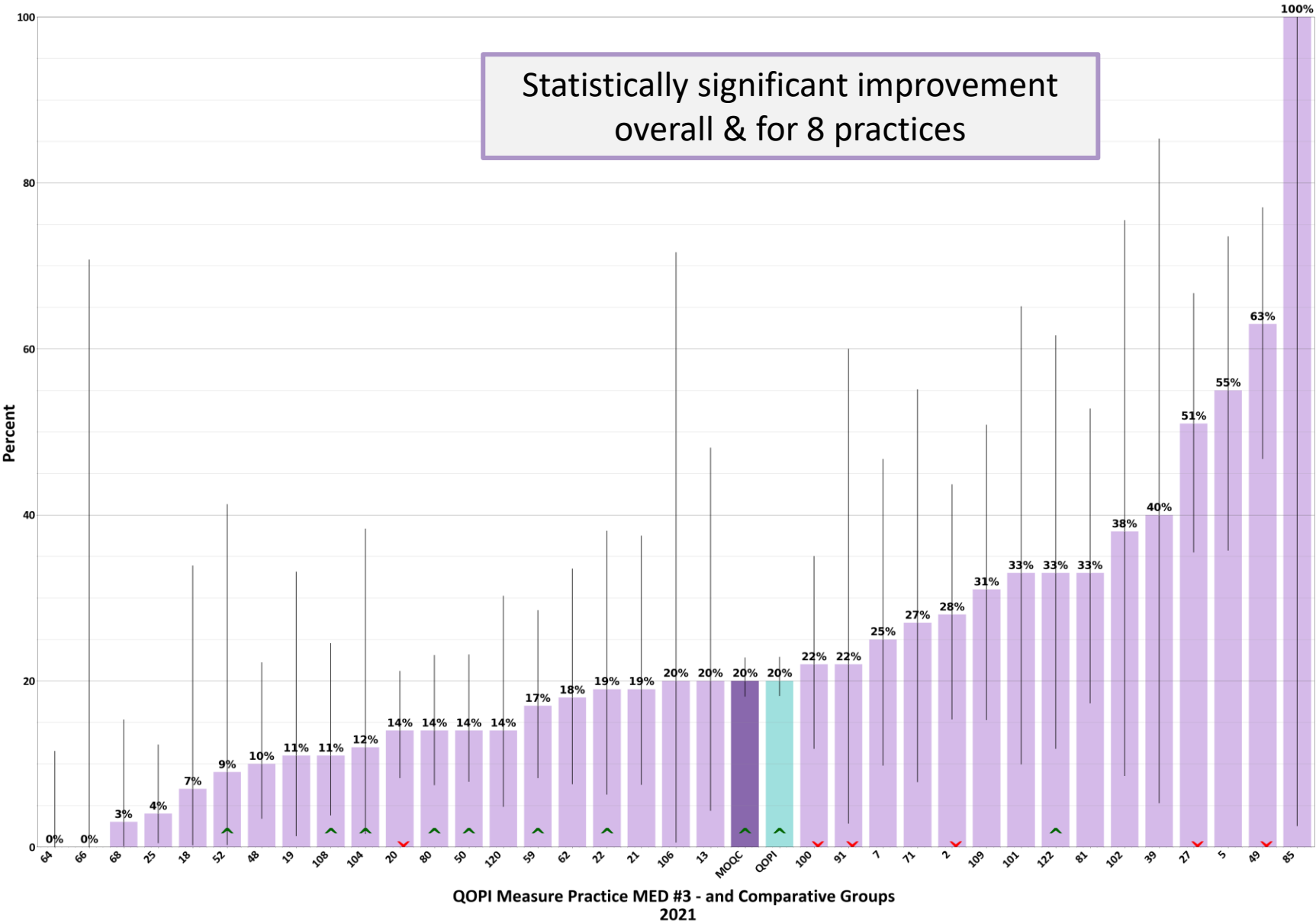
Additional Criteria for Receiving VBR

Level	Criteria
Practice Level	At least one physician and one practice manager from the practice must attend both MOQC regional meetings and at least one biannual meeting during that year
Physician Level	Provider must be enrolled in PGIP for at least one year

Chemotherapy Intent (Curative vs. Non-Curative) Documented
before or within Two Weeks after Administration
N = 4370

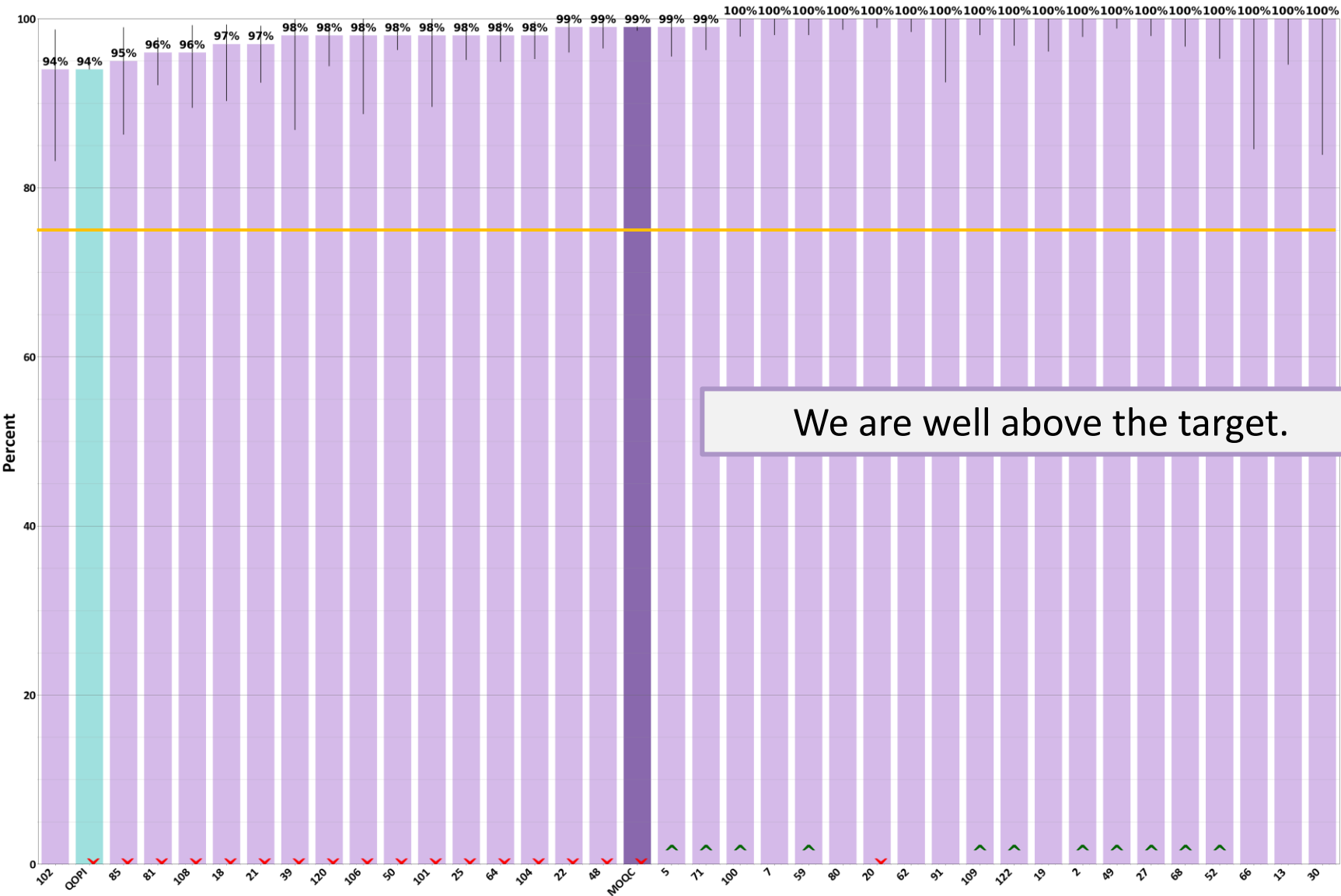


G-CSF Given with 1st Cycle Non-Curative Chemotherapy (Lower Score - Better)
N = 1158



Smoking Status Recorded in Medical Record
N = 6549

VBR Target 75%



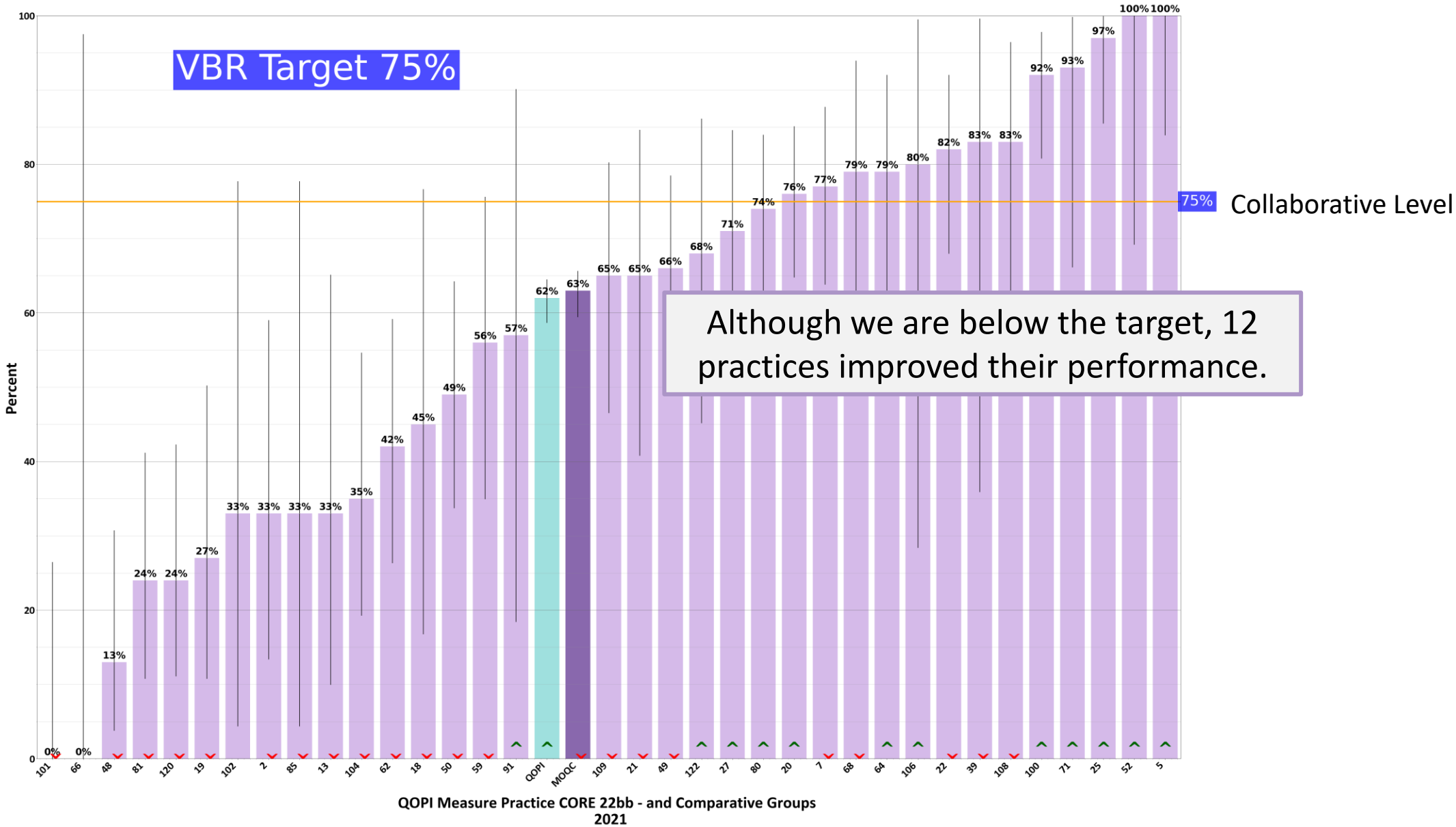
75%

Collaborative Level

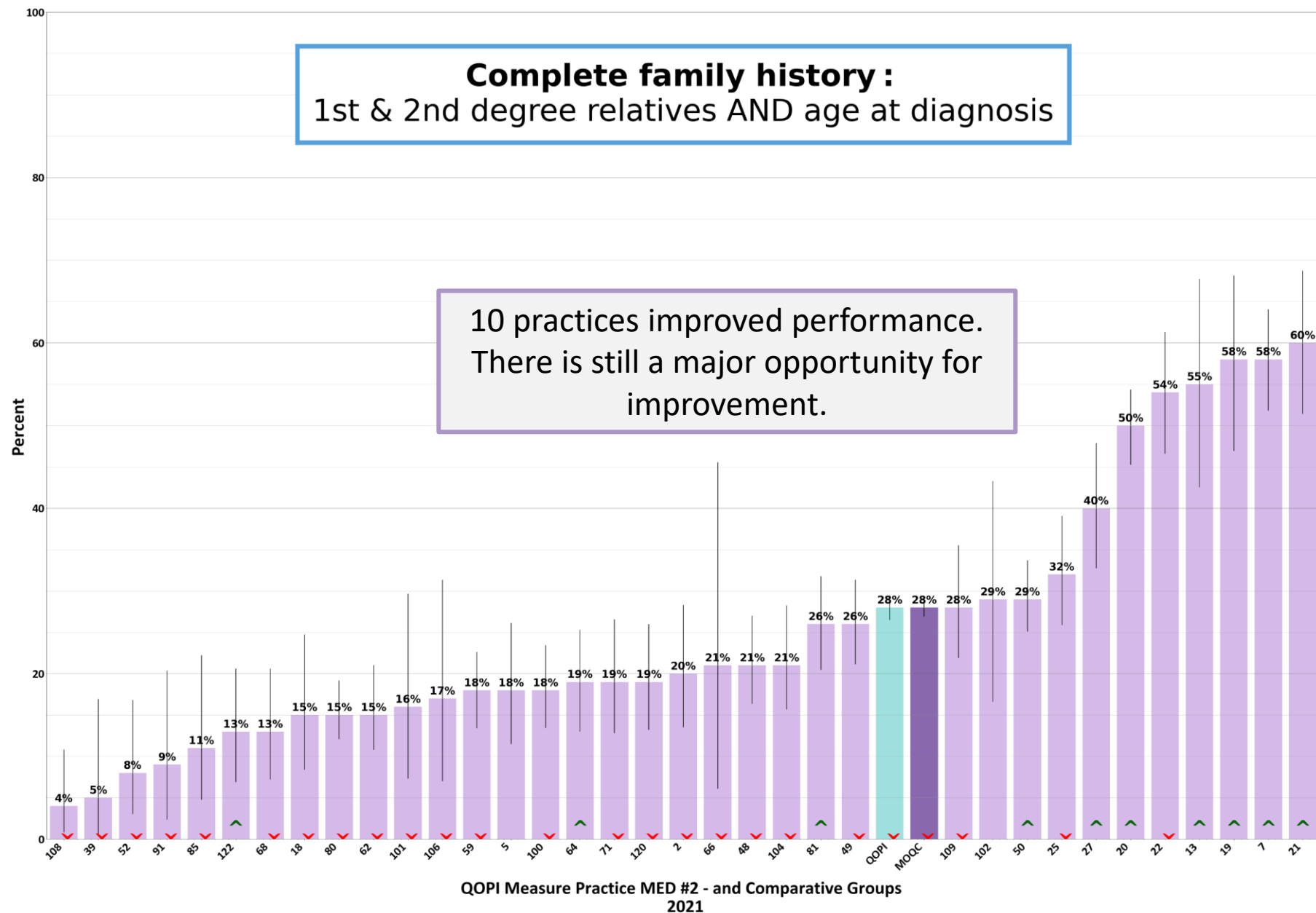
We are well above the target.

QOPI Measure Practice CORE 21aa - and Comparative Groups
2021

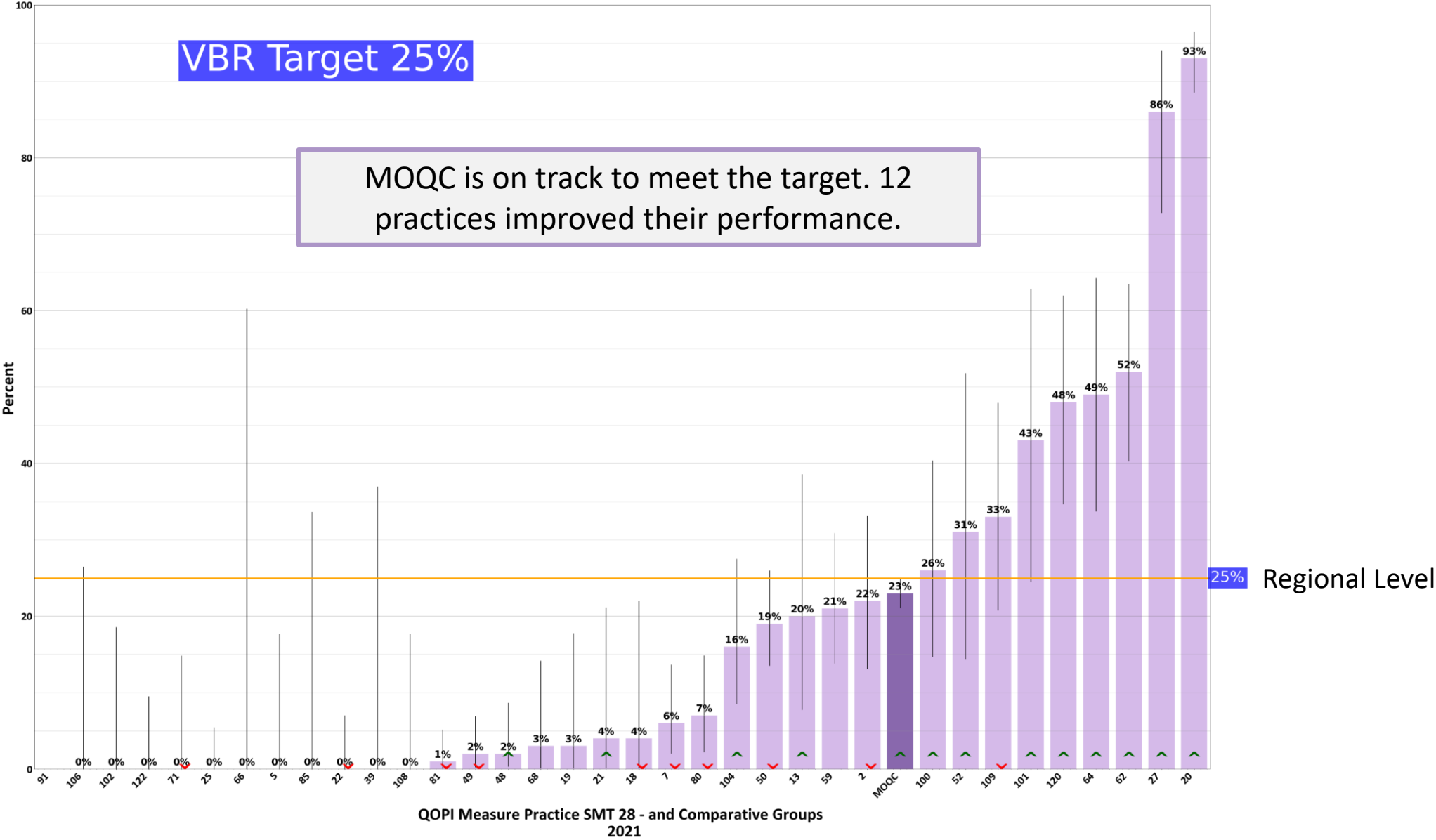
Tobacco Cessation Counseling Given or Patient Referred in Past Year
N = 951



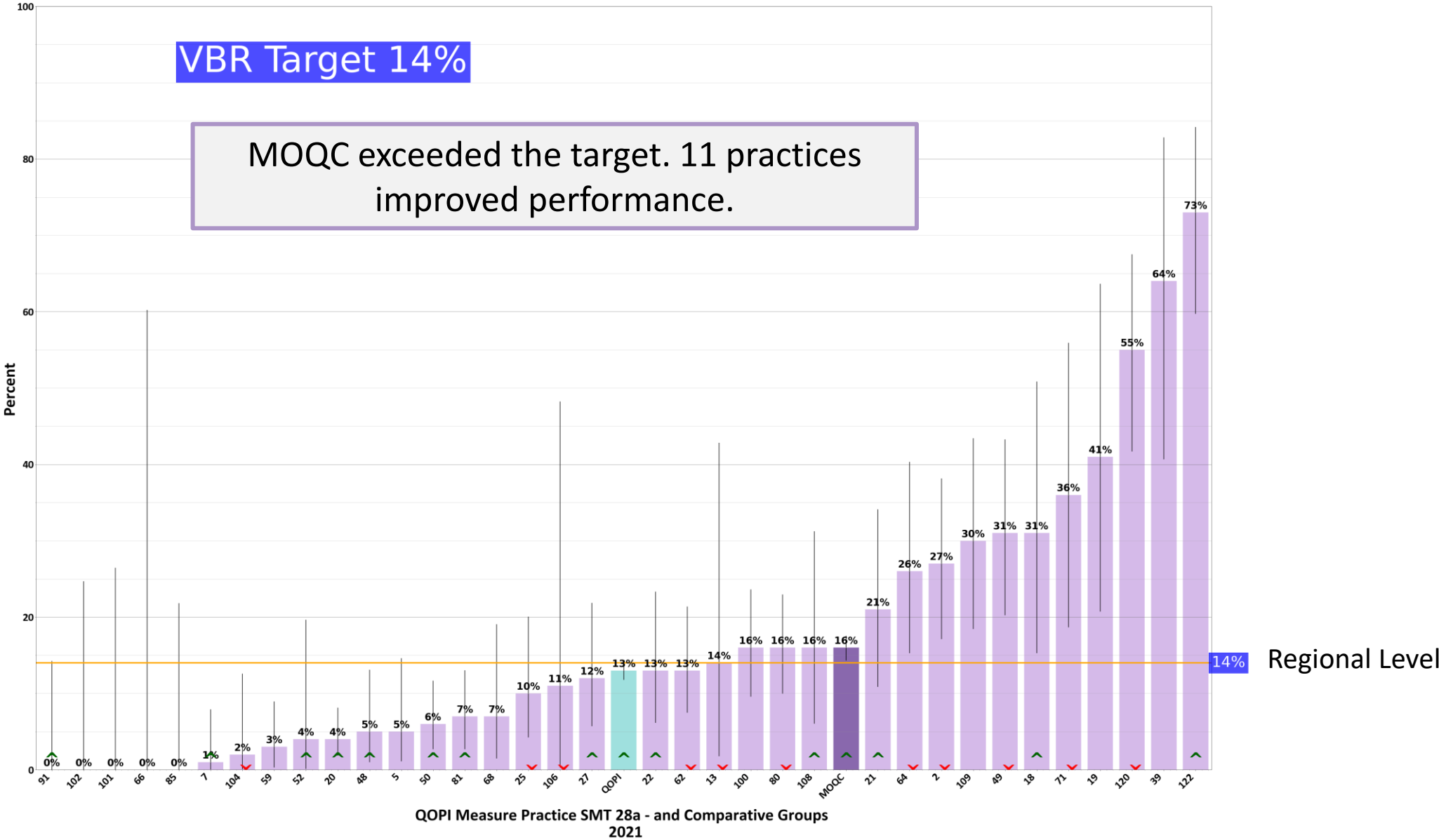
Complete Family History Documented for Patients with Invasive Cancer
N = 5811



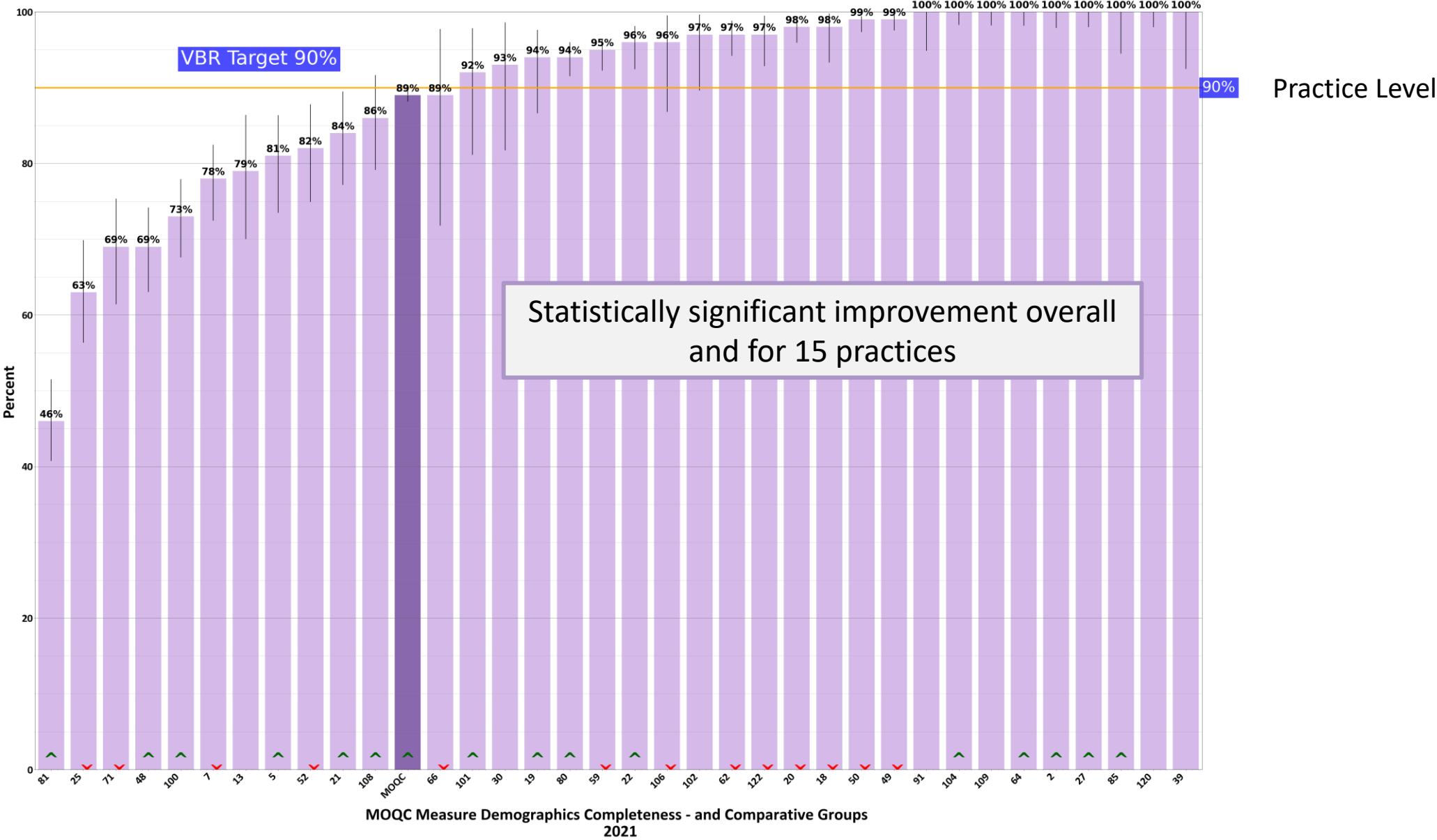
NK-1 RA & Olanzapine Prescribed or Given with High Emetic Risk Chemotherapy
N = 1978



NK-1 RA or Olanzapine Given for Low/Moderate Emetic Risk Cycle 1 Chemotherapy
(Lower Score - Better)
N = 2039



Completeness of Race and Ethnicity Data
N = 7165



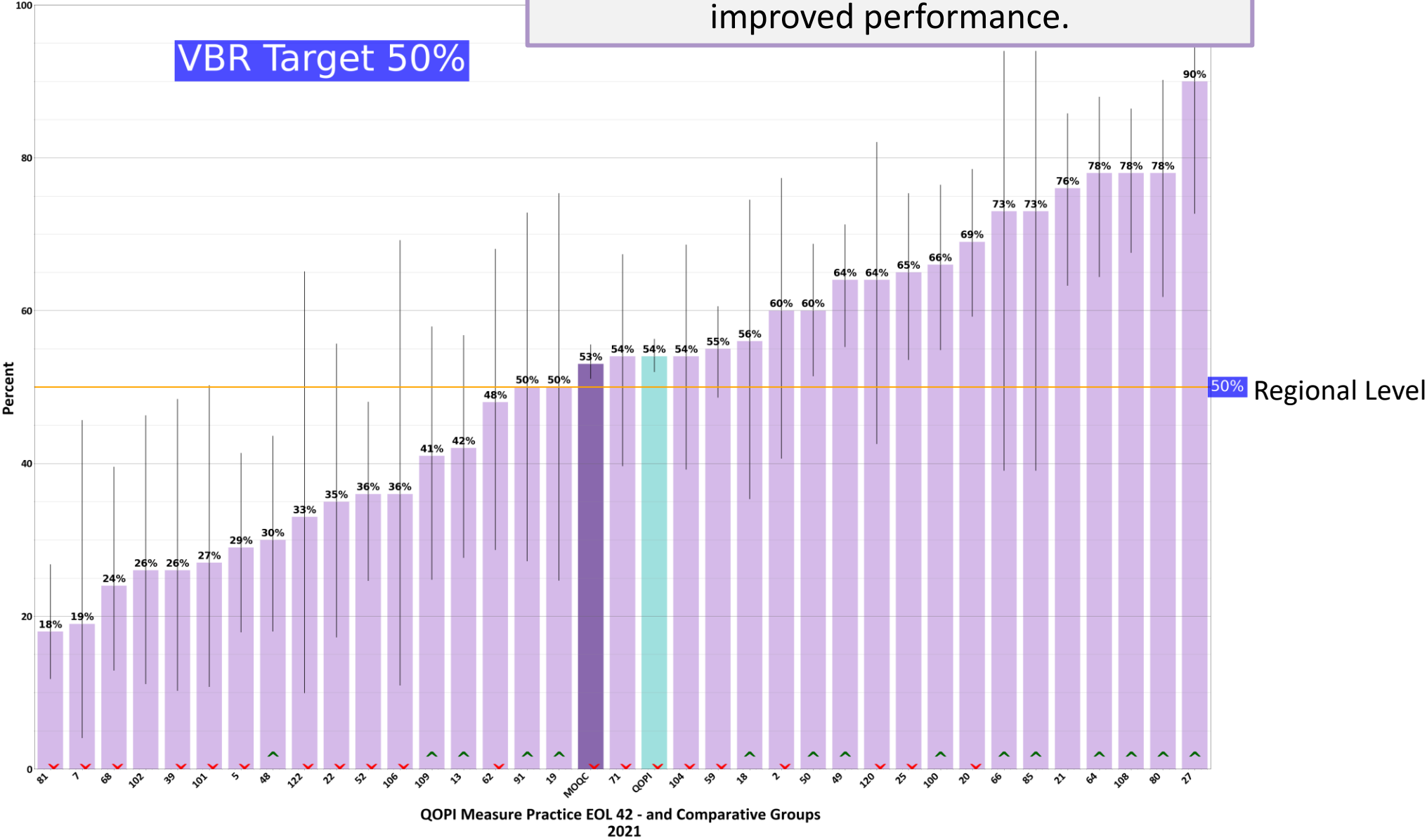
End-of-Life Measures



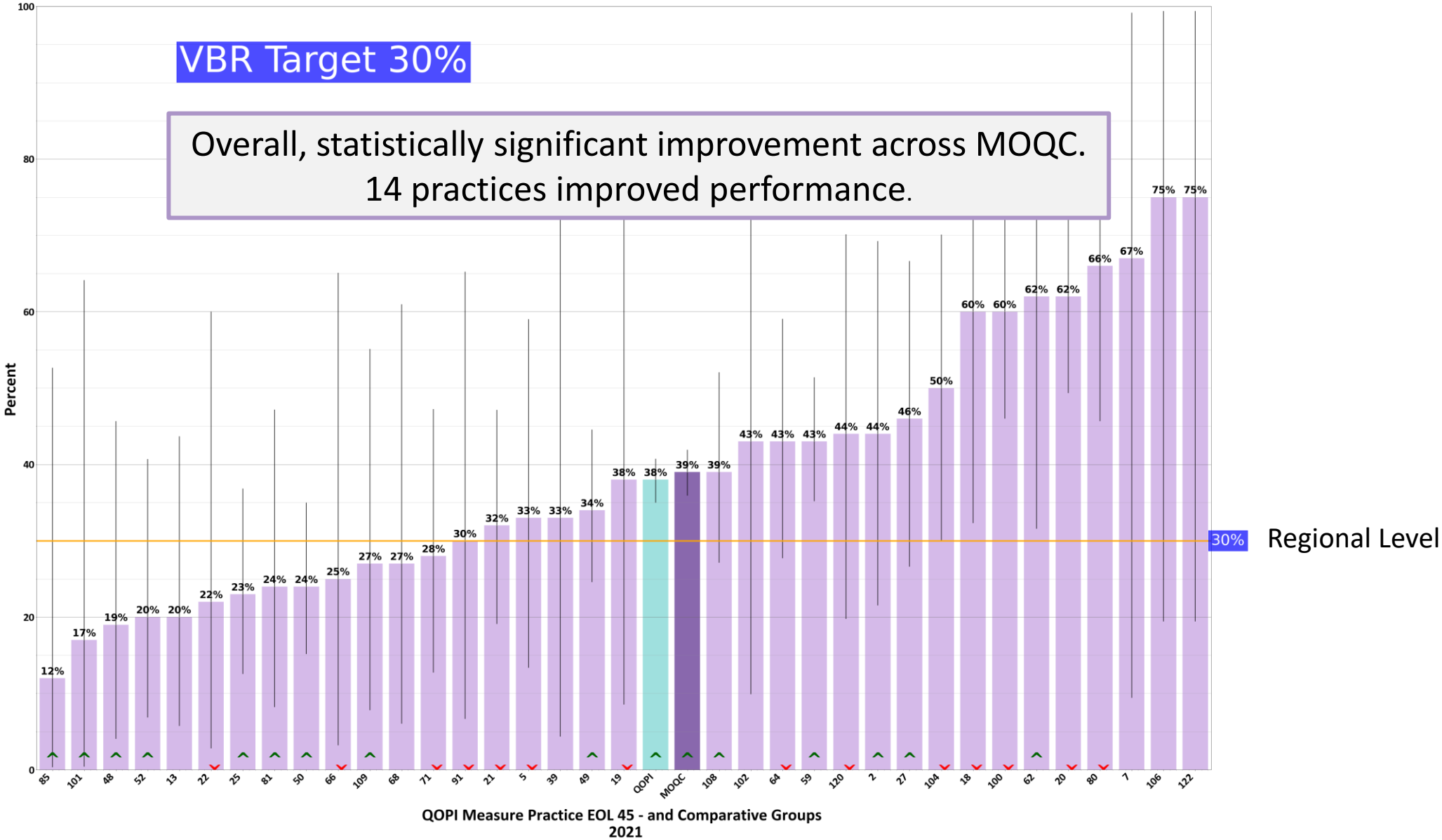
Hospice enrollment
N = 1949

MOQC exceeded the target. 15 practices improved performance.

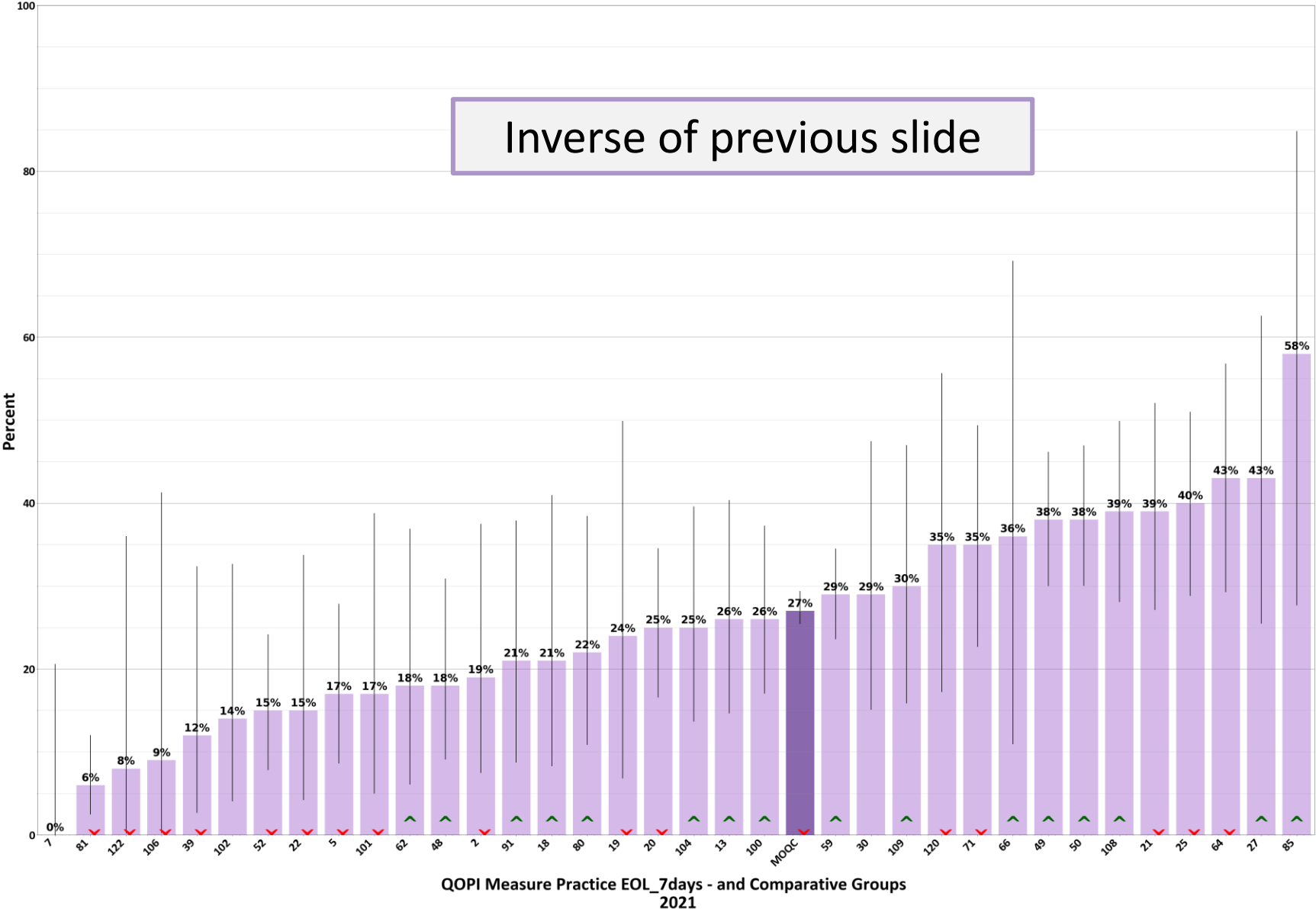
VBR Target 50%



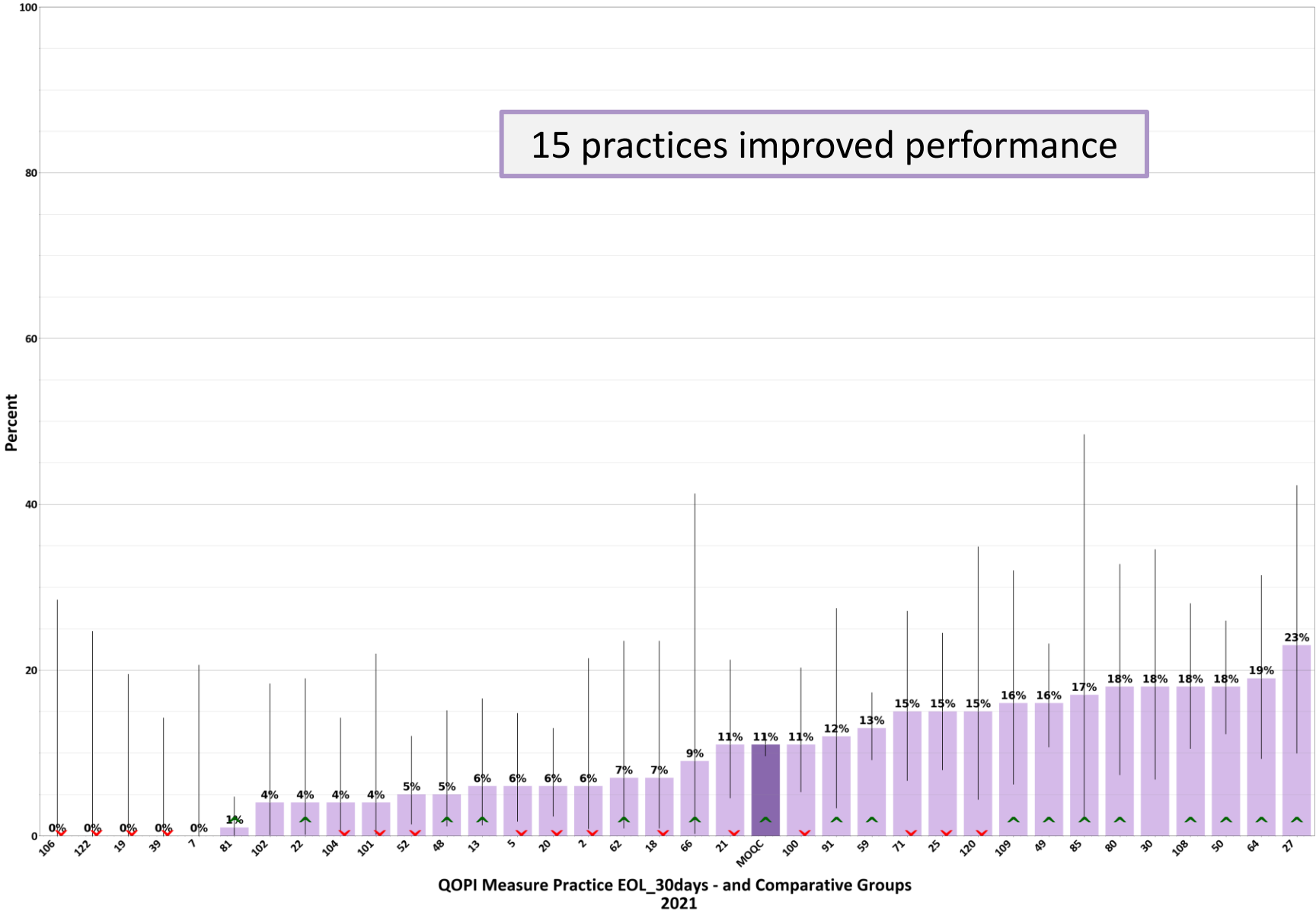
Hospice Enrollment within 7 Days of Death (Lower Score – Better)
N = 1039



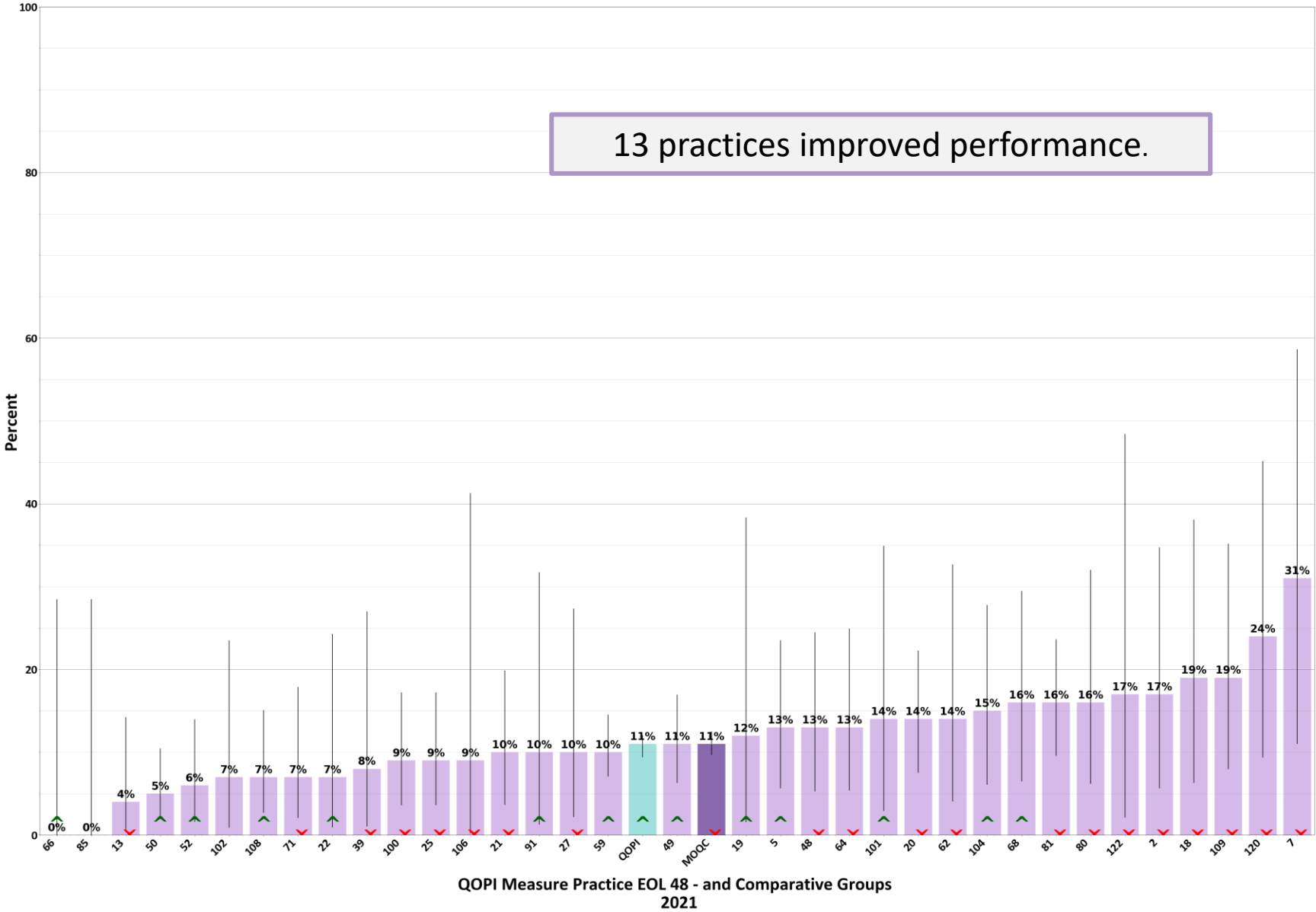
Enrolled in Hospice over 7 Days
N = 1965



Enrolled in Hospice over 30 Days
N = 1965



Chemotherapy Given within the Last 2 Weeks of Life (Lower Score - Better)
N = 1959



Discussion

